

The adhesive used on the VisualTarget glass mount was specially designed to provide a secure bond to glass. It was tested to withstand over 10 times the weight of the enclosure.

But this is only true if it is installed properly.

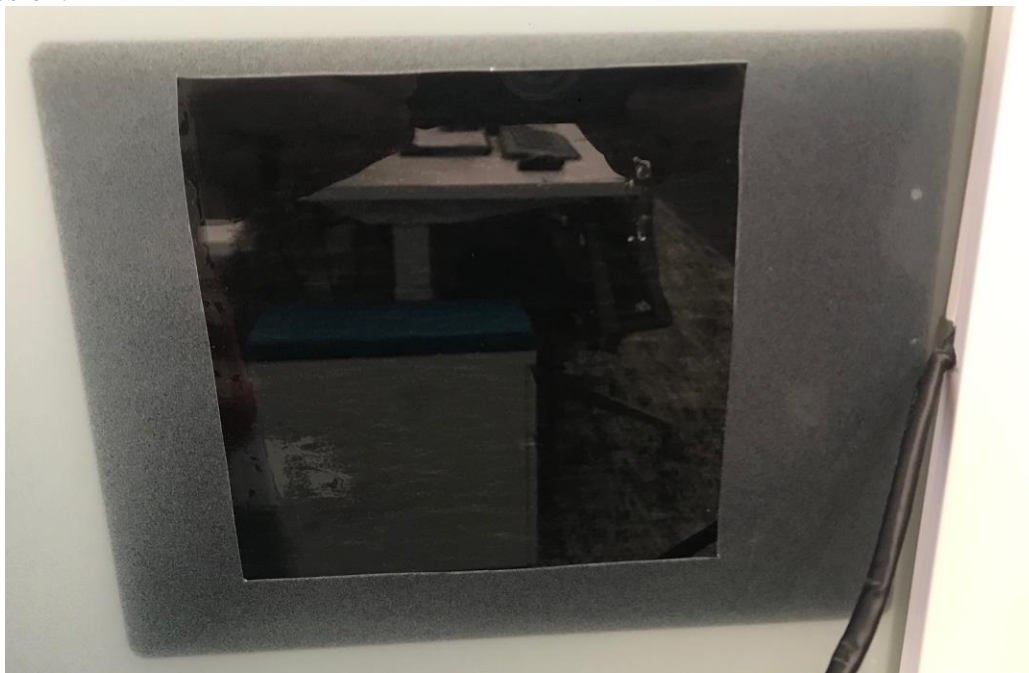
Top reasons for units falling off the glass (from most common to least)

- Not enough pressure is applied on the adhesive
- The glass was not properly cleaned
- Not enough time is given for the adhesive to cure
- A film is present between the mount and glass

Follow these steps for a successful install

1. Ensure no film is present on the glass

The easiest way to do that is to use a sharp blade to try and lift any film off the glass. If a film is present, make a square cutout slightly bigger than the mount, as shown below. Make sure no part of the film is present under the mount, as it may prevent proper adhesion.



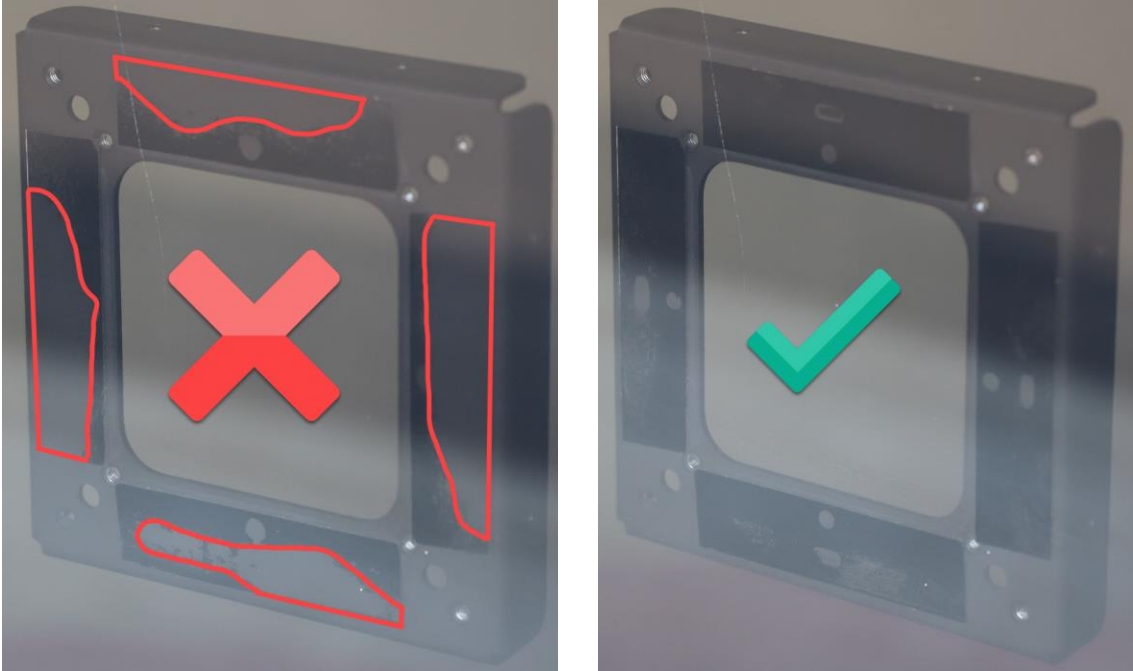
2. Clean glass with provided alcohol wipe

Not cleaning the glass with alcohol can reduce the adhesive strength by as much as 50%. This is the second most popular cause of failure.

Make sure you wait for the alcohol to evaporate before installing the mount.

3. Provide enough pressure on the mount to remove trapped bubbles

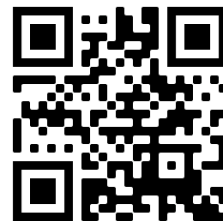
This is the number one cause of failure and is therefore a critical step in the install. The key to success here is to look on the other side of the glass for bubbles. The picture on the left shows the mount installed with insufficient pressure. Air bubbles can be seen highlighted in red. The picture on the right is what you are after.



To help apply sufficient pressure a J rubber roller, such as a Veneer Roller, can be used. Start by placing the mount in the right location and manually applying pressure for it to stick sufficiently on its own. Then roll over the edges of the mount with the J-roller.



Amazon link to the
J-Roller shown here:
magtarget.com/roller



Finally check for remaining air bubble by looking from the other side of the glass.

4. Wait 24hr before installing the enclosure onto the mount

The adhesive reach 50% strength after 20 minutes and 90% after 24hr.



Replacement adhesive
can be purchased at:
magtarget.com/glass

